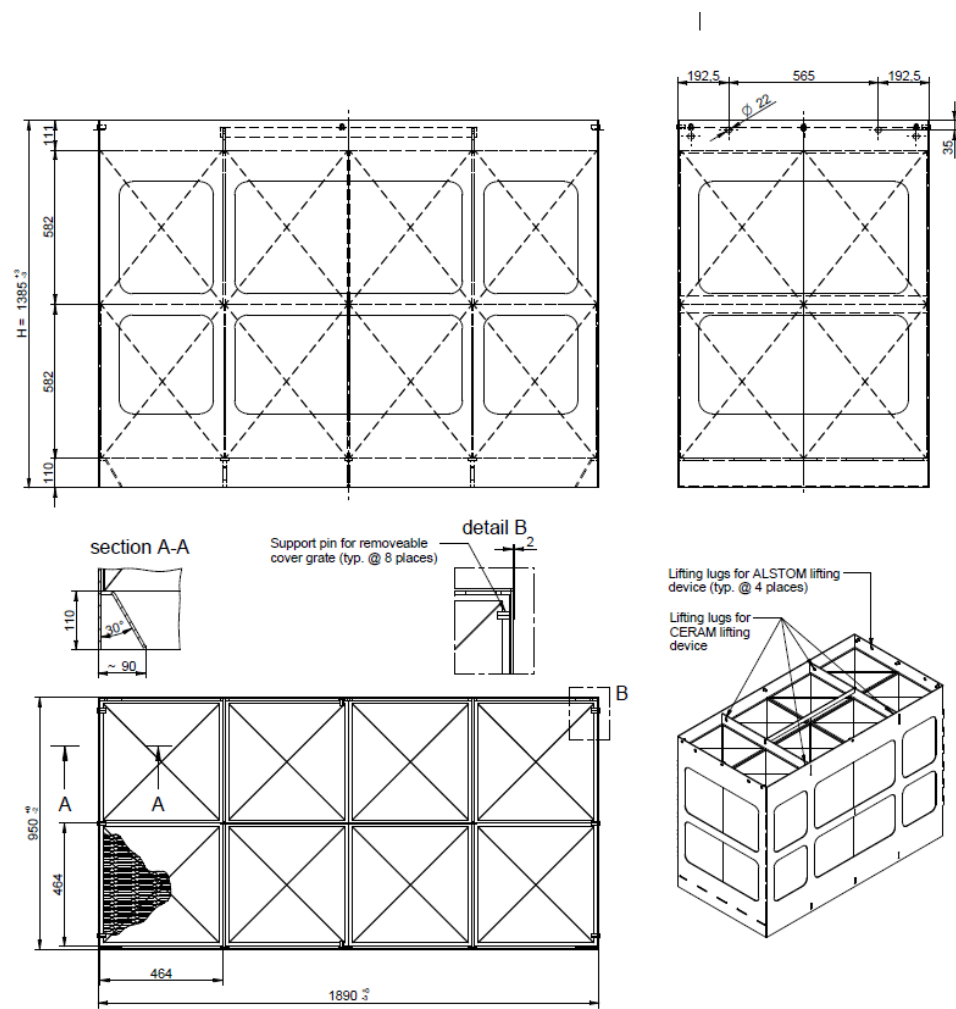
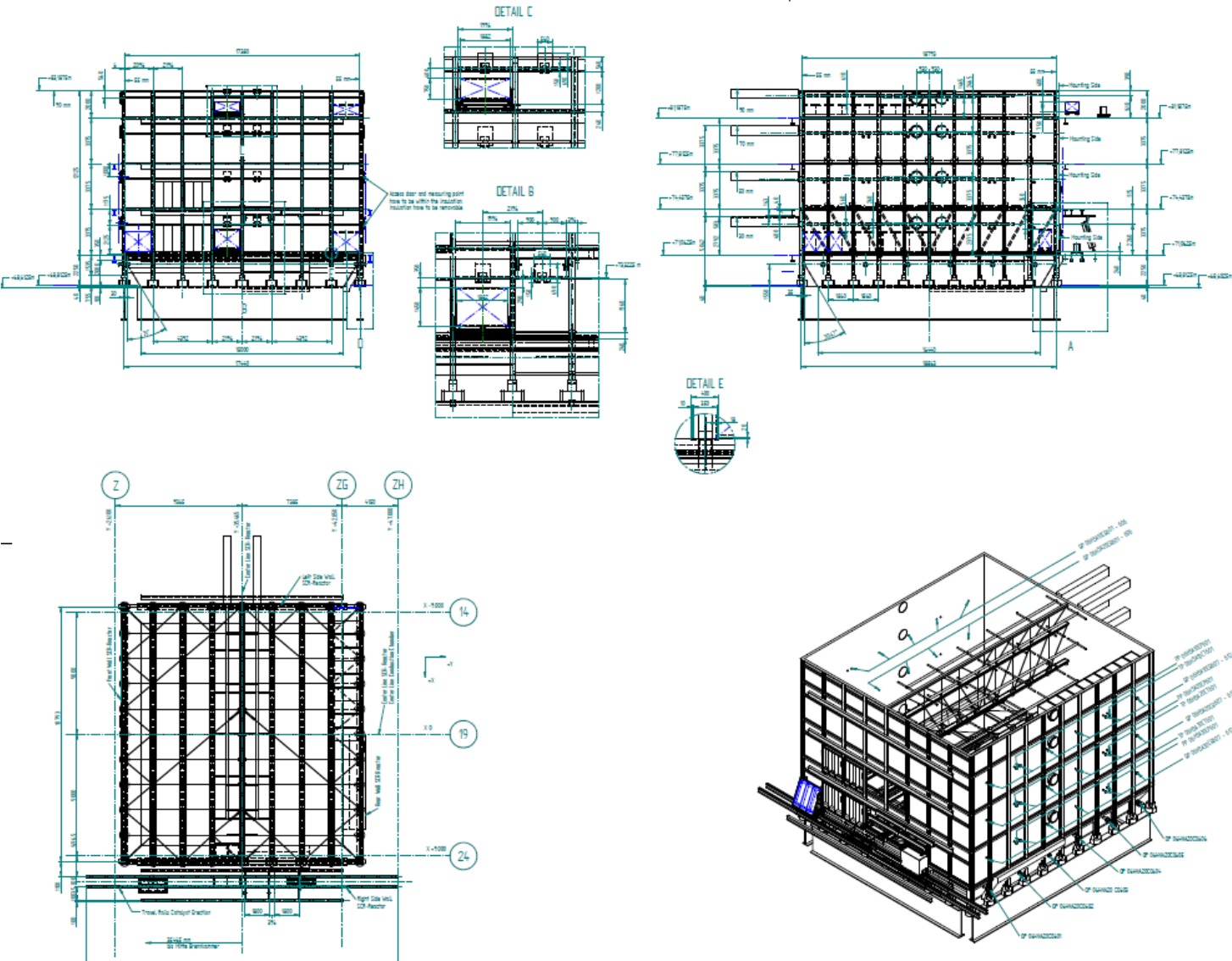


PLATE TYPE CATALYST MODULE



TOTAL NUMBER OF MODULES	304
MODULANZAHL	304
MATERIAL	P2650GH
MATERIAL	P265GH
SURFACE TREATMENT	NO
OBERFLÄCHENBEHANDLUNG	KEINE
COATING	NO
ANSTRICH	KEINER
WEIGHT STEEL PER MODULE	~ 214 kg
GEWICHT STAHL PRO MODUL	~ 214 kg
WEIGHT PLATE TYPE CATALYST PER MODULE	~ 736 kg
GEWICHT PLATTENKAT PRO MODUL	~ 736 kg
WEIGHT PER UNIT CATALYST & MODULE	~ 950 kg
GEWICHT KAT. & MODUL	~ 950 kg
TOTAL WEIGHT UNIT CATALYST & MODULE	~ 288.800 kg
GEWICHT SUMME KAT. & MODUL	~ 288.800 kg

GENERAL ARRANGEMENT SCR-REACTOR



GENERAL ARRANGEMENT FOR SCR REACTOR

